

REV.	DESCRIPTION	DRAWN	CHECKED	APPROVED
A	NEW RELEASE	LJH 08/13/05'		

BOM LIST			
ITEM	PART NAME	Q'ty	NOTES
1	PLASTIC HOOD	2	ABS
2	BOLT	2	#4-40
3	NUT	2	M3
4	LONG SCREW	2	M3
5	SMALL WASHER	2	
6	SHORT SCREW	2	M3
7	MIDDLE WASHER	2	M3

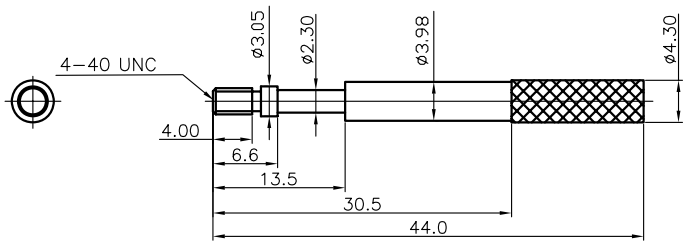
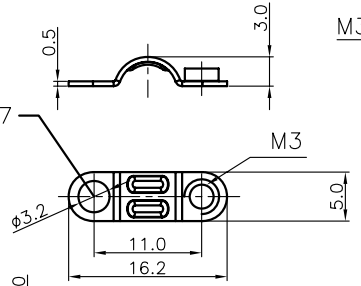
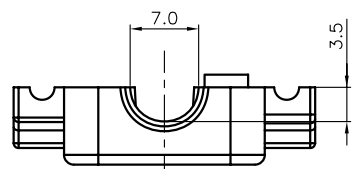
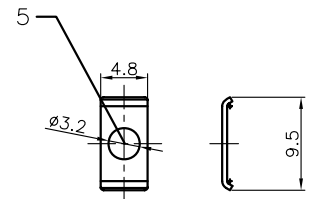
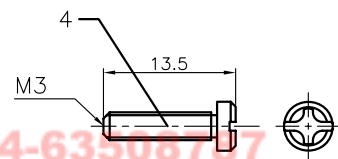
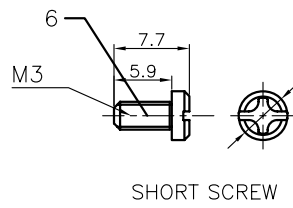
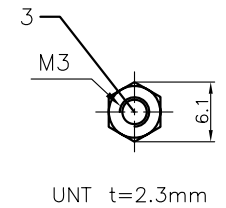
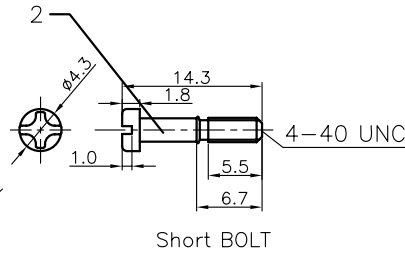
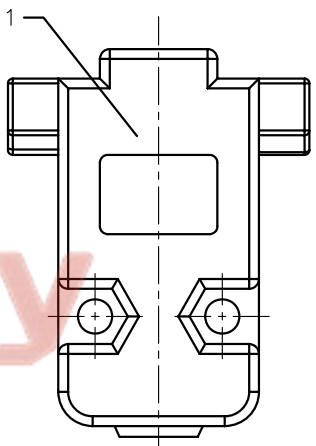
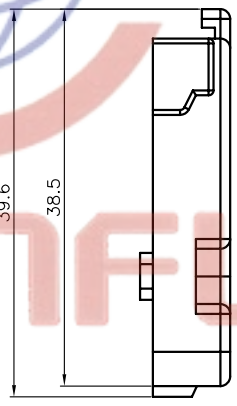
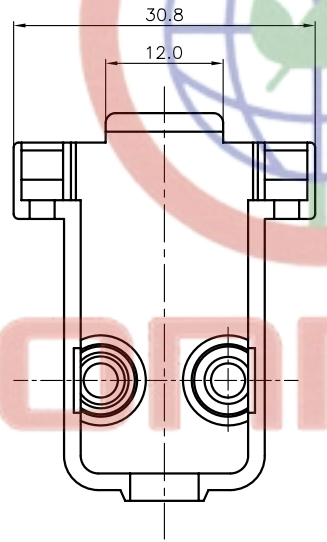
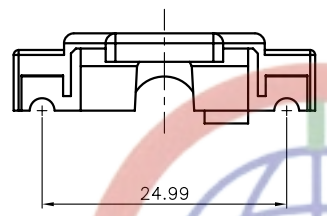
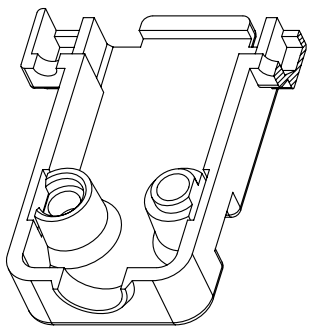
NOTES:
1. PART NUMBER CODE:
DS1046 - 09 X X X

Bolt type
L: Long
S: Short


Packing type
1: Mix packing
2: Separation packing

Cover Material
C: Chromium Plated

Positions
09: 9pin



Tel: 86-574-63508707
Fax: 86-574-63510817

GENERAL TOLERANCE		ANGLE TOLERANCE		PROJECTION		TITLE	
X.	±0.60	X.	±5°	UNITS	mm	D-SUB 9pin Cover Chromium Plated	
.X	±0.38	.X	±3°	SHEET SIZE	A4	SERIES	DS1046 SERIES
.XX	±0.25	.XX	±2°				
DRAWING TYPE		COSTOMER		Add: West Lake No. 12, Hangzhou, China			
SCALE		1:1		SHEET		1 OF 1	
DRAWING NO.		C-DS1046-09XXX		 晨翔电子有限公司 CONNFLY CONNFLY ELECTRONIC CO. LTD			

REV.	DESCRIPTION	DRAWN	CHECKED	APPROVED
A	NEW RELEASE	LJH 05/18/05'		

NOTES:

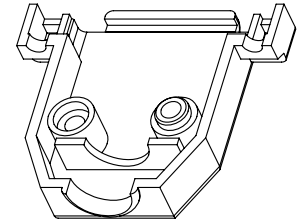
1. PART NUMBER CODE:
DS1046 - 15 X X X

Bolt type
L: Long
S: Short

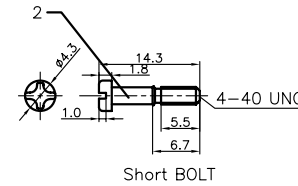
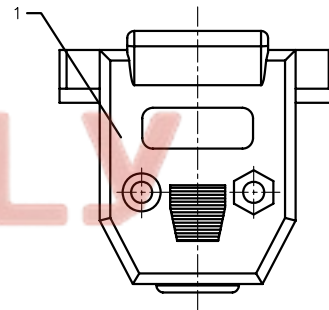
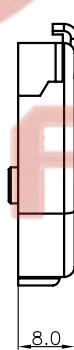
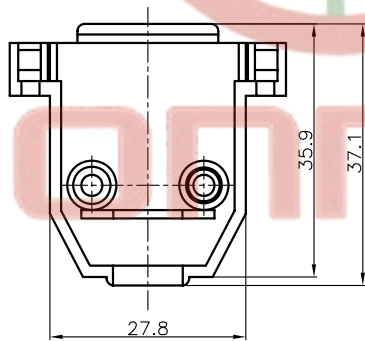
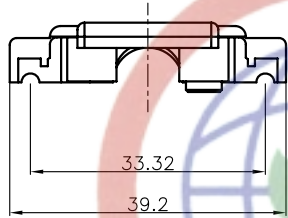
Packing type
1: Mix packing
2: Separation packing

Cover Material
C: Chromium Plated

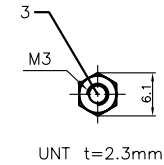
Positions
15: 15pin



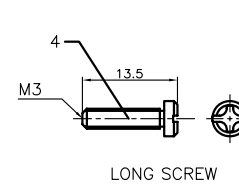
BOM LIST			
ITEM	PART NAME	Q'ty	NOTES
1	PLASTIC HOOD	2	ABS
2	BOLT	2	#4-40
3	NUT	2	M3
4	LONG SCREW	2	M3
5	SMALL WASHER	2	
6	SHORT SCREW	2	M3
7	MIDDLE WASHER	2	M3



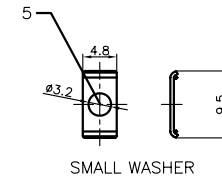
Short BOLT



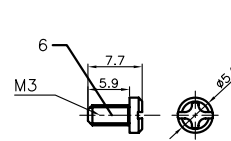
UNT t=2.3mm



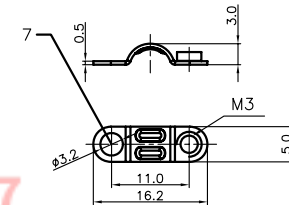
LONG SCREW



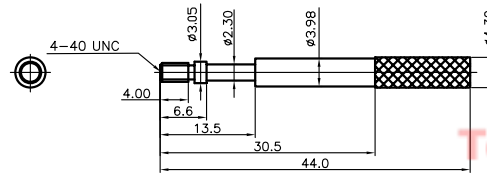
SMALL WASHER



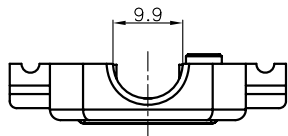
SHORT SCREW



MIDDLE WASHER



Long BOLT



Tel: 86-574-63508787

Fax: 86-574-63510817

GENERAL TOLERANCE		ANGLE TOLERANCE		PROJECTION	TITLE
X.	±0.60	X.	±5°	mm	D-SUB 15pin Cover Chromium Plated
.X	±0.38	.X	±3°	A4	SERIES DS1046 SERIES
.XX	±0.25	.XX	±2°		
DRAWING TYPE	CUSTOMER	Add: West China (Guangdong) Gxin Niujia China			
SCALE	1:1	SHEET	1 OF 1		
DRAWING NO.	C-DS1046-15XXX				

晨翔电子有限公司
CONNFLY CONNFLY ELECTRONIC CO. LTD

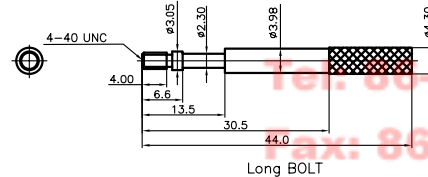
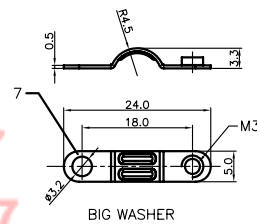
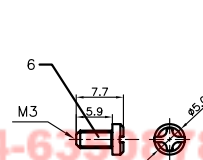
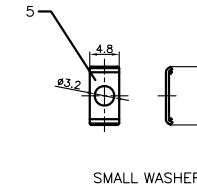
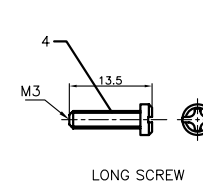
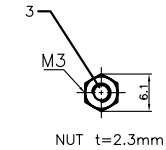
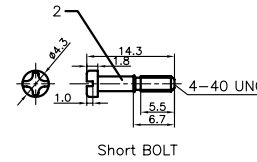
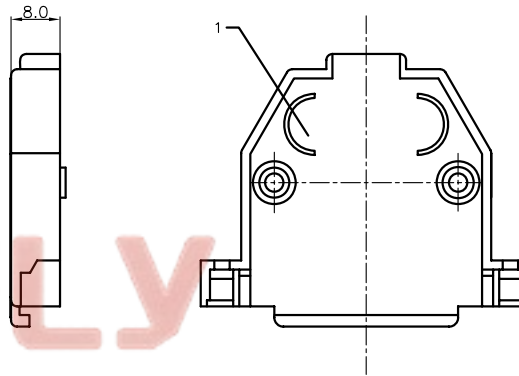
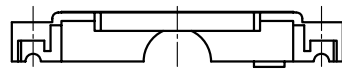
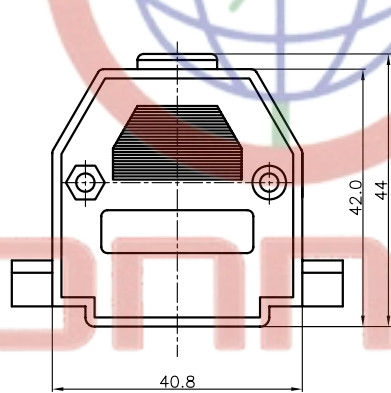
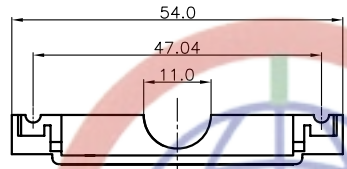
REV.	DESCRIPTION	DRAWN	CHECKED	APPROVED
A	NEW RELEASE	LJH 10/26/05'		

BOM LIST			
ITEM	PART NAME	Q'ty	NOTES
1	PLASTIC HOOD	2	ABS
2	BOLT	2	#4-40
3	NUT	2	M3
4	LONG SCREW	2	M3
5	SMALL WASHER	2	
6	SHORT SCREW	2	M3
7	BIG WASHER	2	M3

NOTES:

1. PART NUMBER CODE:
DS1046 - 25 X X X

- Bolt type
L: Long
S: Short
- Packing type
1: Mix packing
2: Separation packing
- Cover Material
C: Chromium Plated
- Positions
25: 25pin



GENERAL TOLERANCE		ANGLE TOLERANCE		PROJECTION	TITLE
X.	±0.60	X.	±5°	mm	D-SUB 25pin Cover Chromium plated
.X	±0.38	.X	±3°		
.XX	±0.25	.XX	±2°		
DRAWING TYPE	CUSTOMER	SHEET		SHEET SIZE	SERIES
SCALE	1:1	1 OF 1		A4	DS1046 SERIES
DRAWING NO.	C-DS1046-25XXX				

晨翔电子有限公司
CONNFLY CONNFLY ELECTRONIC CO. LTD

REV.	DESCRIPTION	DRAWN	CHECKED	APPROVED
A	NEW RELEASE	LJH 10/26/05'		

BOM LIST			
ITEM	PART NAME	Q'ty	NOTES
1	PLASTIC HOOD	2	ABS
2	BOLT	2	#4-40
3	NUT	2	M3
4	LONG SCREW	2	M3
5	SMALL WASHER	2	
6	SHORT SCREW	2	M3
7	BIG WASHER	2	M3

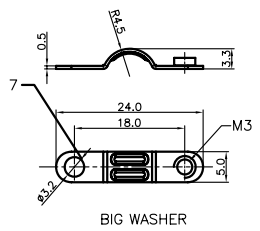
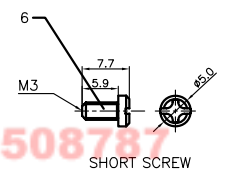
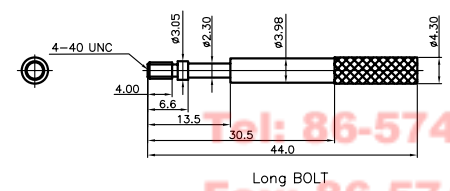
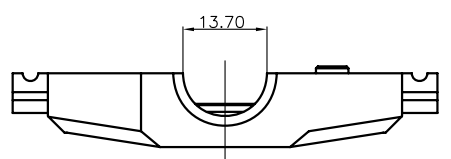
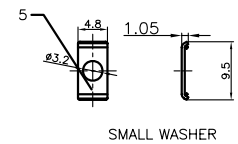
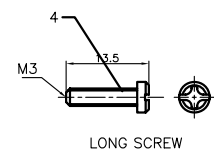
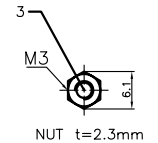
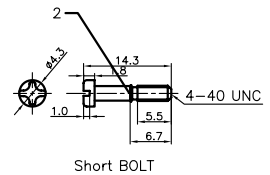
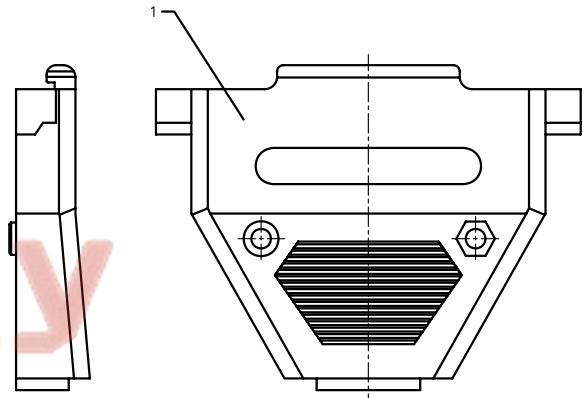
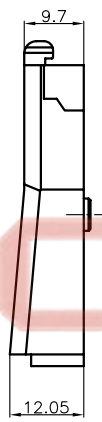
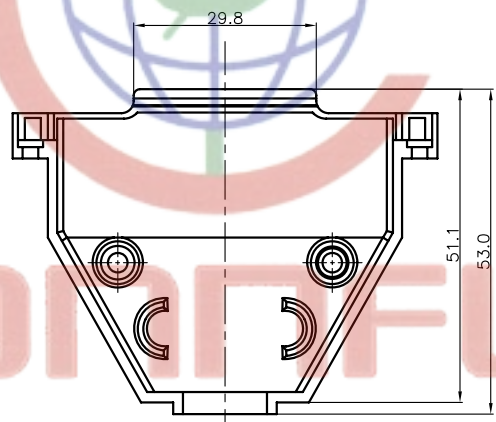
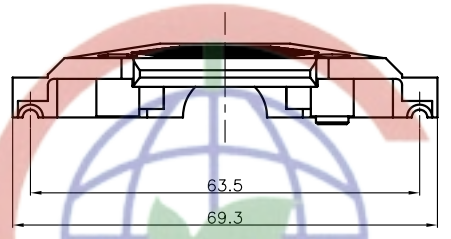
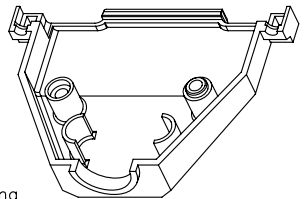
NOTES:
1. PART NUMBER CODE:
DS1046 - 37 X X X

Bolt type
L: Long
S: Short


Packing type
1: Mix packing
2: Separation packing

Cover Material
C: Chromium Plated

Positions
37: 37pin



Tel: 86-574-63508787
Fax: 86-574-63510817

GENERAL TOLERANCE		ANGLE TOLERANCE		PROJECTION		TITLE	
X.	±0.60	X.	±5°	mm		D-SUB 37pin Cover Chromium plated	
.X	±0.38	.X	±3°	UNITS		SHEET SIZE	
.XX	±0.25	.XX	±2°	A4		SERIES DS1046 SERIES	
DRAWING TYPE		COSTOMER		 晨翔电子有限公司 CONNFLY CONNFLY ELECTRONIC CO. LTD			
SCALE		SHEET					
DRAWING NO.		1 OF 1					
C-DS1046-37XXX							