



HIGH EFFICIENCY RECTIFIER

HER101 THRU HER108

VOLTAGE RANGE
CURRENT

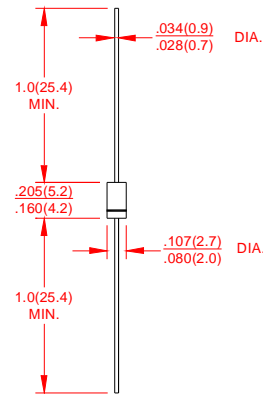
50 to 1000 Volts
1.0Ampere

FEATURES

- Low coat construction
- Fast switching for high efficiency.
- Low reverse leakage
- High forward surge current capability
- High temperature soldering guaranteed:
260°C/10 secods/.375"(9.5mm)lead length at 5 lbs(2.3kg) tension

MECHANICAL DATA

- Case: Transfer molded plastic
- Epoxy: UL94V-O rate flame retardant
- Polarity: Color band denotes cathode end
- Lead: Plated axial lead, solderable per MIL-STD-202E method 208C
- Mounting position: Any
- Weight: 0.012ounce, 0.33 grams



DO-41

Dimensions in inches and (millimeters)

MAXIMUM RATINGS AND ELECTRICAL CHARACTERISTICS

- Ratings at 25°C ambient temperature unless otherwise specified
- Single Phase, half wave, 60Hz, resistive or inductive load
- For capacitive load derate current by 20%

	SYMBOLS	HER 101	HER 102	HER 103	HER 104	HER 105	HER 106	HER 107	HER 108	UNITS	
Maximum Repetitive Peak Reverse Voltage	V_{RRM}	50	100	200	300	400	600	800	1000	Volts	
Maximum RMS Voltage	V_{RMS}	35	70	140	210	280	420	560	800	Volts	
Maximum DC Blocking Voltage	V_{DC}	50	100	200	300	400	600	800	1000	Volts	
Maximum Average Forward Rectified Current 0.375"(9.5mm) lead length at $T_A=50^\circ\text{C}$	$I_{(AV)}$	1.0								Amp	
Peak Forward Surge Current 8.3mS single half sine wave superimposed on rated load (JEDEC method)	I_{FSM}	30								Amps	
Maximum Instantaneous Forward Voltage @ 1.0A	V_F	1.0		1.3		1.5		1.7		Volts	
Maximum DC Reverse Current at Rated DC Blocking Voltage	I_R	$T_A = 25^\circ\text{C}$								μA	
		$T_A = 125^\circ\text{C}$									
Maximum Full Load Recovery Current,full cycle average 0.375"(9.5mm)lead length at $T_L=55^\circ\text{C}$	$I_{R(AV)}$	100								μA	
Maximum Reverse Recovery Time (NOTE1)	t_{rr}	50					75				ns
Typical Thermal Resistance (NOTE 2)	C_J	15					12				PF
Typical Thermal Resistance(NOTE 3)	$R_{\theta JA}$	60								$^\circ\text{C/W}$	
Operating Junction Temperature Range	$T_J T_{STG}$	(-55 to +150)								$^\circ\text{C}$	

Notes:

1. Test Conditions: $I_f=0.5\text{mA}$, $I_r=1.0\text{mA}$, $I_{rr}=0.25\text{A}$
2. Measured at 1 MHz and applied reverse of 4.0 volts.
3. Thermal resistance from junction to ambient with .375"(9.5mm)lead length, P.C.B. mounted.



HIGH EFFICIENCY RECTIFIER

HER101 THRU HER108

VOLTAGE RANGE
CURRENT

50 to 1000 Volts
1.0Ampere

RATING AND CHARACTERISTIC CURVES HER101 THRU HER108

FIG.1-TYPICAL FORWARD CURRENT DERATING CURVE

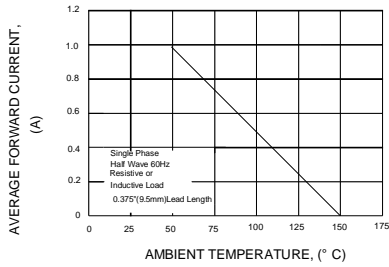


FIG.2-MAXIMUM NON-REPETITIVE PEAK FORWARD SURGE CURRENT

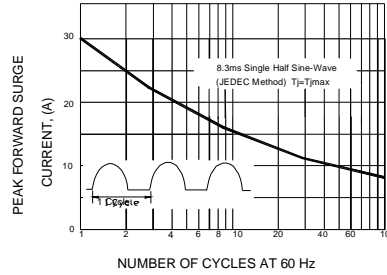


FIG.3-TYPICAL INSTANTANEOUS FORWARD CHARACTERISTICS

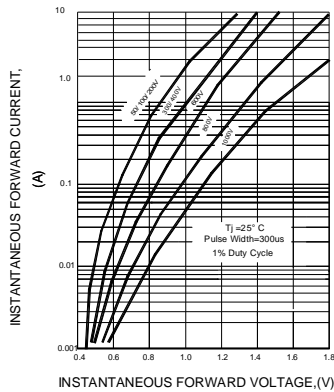


FIG.4-TYPICAL REVERSE CHARACTERISTICS

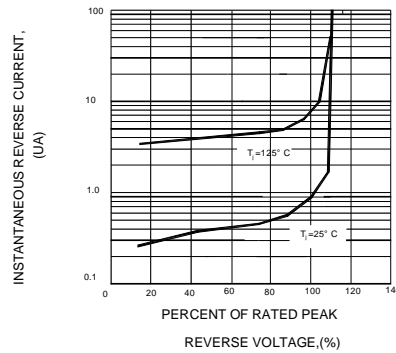


FIG.5-TYPICAL JUNCTION CAPACITANCE

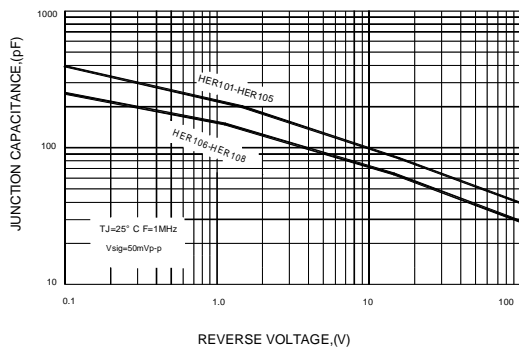
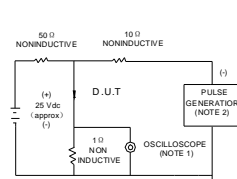
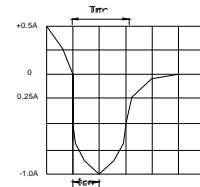


FIG.6-TEST CIRCUIT DIAGRAM AND REVERSE RECOVERY TIME CHARACTERISTIC



NOTE: 1. Rise Time = 7ns max. Input Impedance = 1megohm, 22pF
2. Rise time = 10ns max. Source Impedance = 50 ohms



SET TIME BASE FOR 50 / 100NS / cm