



小型波动开关
小型带灯波动开关

Miniature Rocker Switch

Miniature Illuminated Rocker Switch

MRS Series
MIRS Series



RoHS

型号说明 Ordering Information

MRS-102A-2C7-R/B

- 基座颜色 Base color
- 盖帽颜色 Cap color
- 盖帽标记 Cap marking
- 产品序号 Product order
- 规格 Rating
- 电路特性 Circuitry trait
- 刀数 Poles
- 小型带灯波动开关 Miniature Illuminated Rocker Switch
- 小型波动开关 Miniature Rocker Switch

技术特性 Specification

1. 规格 Rating: () 6A 125VAC; 3A 250VAC
(A) 10A 125VAC; 6A 250VAC
2. 接触电阻 Contact Resistance: 35mΩ max
3. 绝缘电阻 Insulation Resistance: 500VDC 100MΩ min
4. 耐电压 Dielectric Strength: 1500VAC, 1Minute
5. 操作温度 Operating Temperature: -25°C ~ +85°C
6. 电气寿命 Electrical Life: 10,000 Cycles

电路特性 Circuitry trait

01	ON	—	OFF
02	ON	—	ON
11	(ON)		OFF
12	ON	—	(ON)
03	ON	OFF	ON
13	ON	OFF	(ON)
23	(ON)	OFF	(ON)

(): 回弹指示 Indicates Momentary

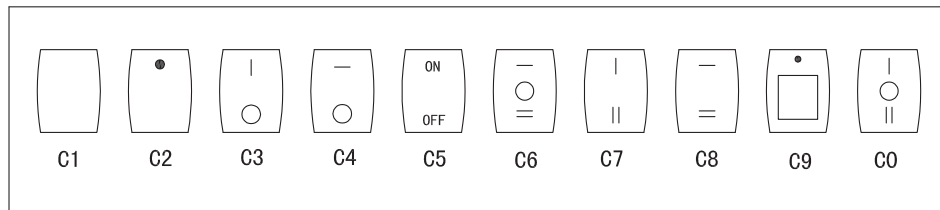
盖帽颜色 Cap color

黑 Black	(B)
白 White	(W)
红 Red	(R)
黄 Yellow	(Y)
绿 Green	(G)
蓝 Blue	(BL)
桔黄 Orange	(O)
灰 Gray	(GR)

基座颜色 Base color

黑 Black	(B)
白 White	(W)
灰 Gray	(GR)

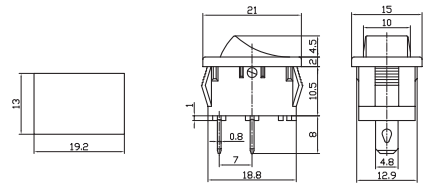
盖帽标记 Cap marking



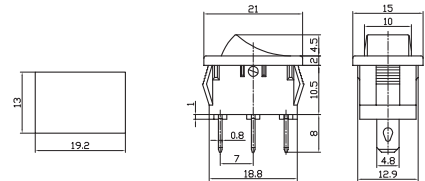
防水罩 Water proof cap



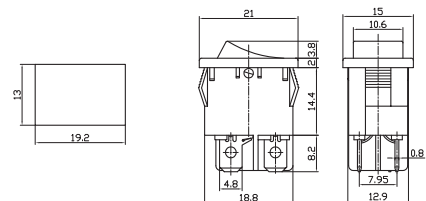
MRS-101 ON-OFF
MRS-111 (ON)-OFF
MRS-101A ON-OFF
MRS-111A (ON)-OFF
SPST 2P



MRS-102 MRS-102A ON-ON
MRS-103 MRS-103A ON-OFF-ON
MRS-112 MRS-112A ON-(ON)
SPDT 3P



MRS-2-101-2 ON-OFF
MRS-2-101A-2 ON-OFF
SPST 2P
MIRS-101 ON-OFF
MIRS-101A ON-OFF
SPST 3P





小型波动开关

Miniature Rocker Switch

MRS Series

小型带灯波动开关

Miniature Illuminated Rocker Switch

MIRS Series

	<p>MIRS-201 ON-OFF MIRS-201A ON-OFF MRS-201-2 ON-OFF MRS-201A-2 ON-OFF DPST 4P</p>	
	<p>MIRS-101-2 ON-OFF 10A 125VAC; 6A 250VAC SPST 3P</p>	
	<p>MRS-101-2 ON-OFF MRS-101A-2 ON-OFF SPST 2P</p>	
	<p>MRS-102-2 MRS-102A-2 ON-ON MRS-103-2 MRS-103A-2 ON-OFF-ON MRS-113-2 MRS-113A-2 ON-OFF-(ON) MRS-123-2 MRS-123A-2 (ON)-OFF-(ON) SPDT 3P</p>	
	<p>MRS-101L-2 ON-OFF MRS-101AL-2 ON-OFF SPST 2P</p>	
	<p>MRS-102L-2 ON-ON MRS-102AL-2 ON-ON MRS-103L-2 ON-OFF-ON MRS-103AL-2 ON-OFF-ON SPDT 3P</p>	
	<p>MIRS-101-3+LED ON-OFF 6A 125VAC; 3A 250VAC SPST 4P</p>	



小型波动开关

Miniature Rocker Switch

MRS Series

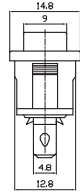
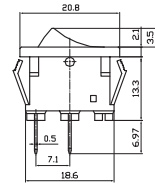
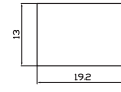
小型带灯波动开关

Miniature Illuminated Rocker Switch

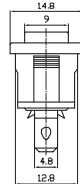
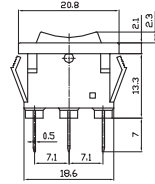
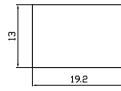
MIRS Series



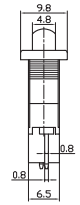
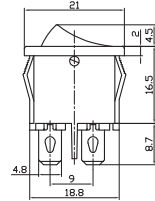
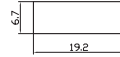
MRS-101A-4 ON-OFF
10A 125VAC; 6A 250VAC
SPST 2P



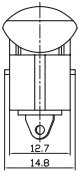
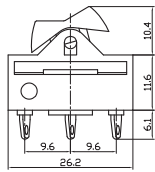
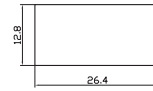
MRS-102A-4 ON-ON
MRS-103A-4 ON-OFF-ON
10A 125VAC; 6A 250VAC
SPDT 3P



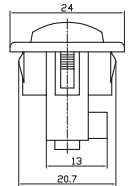
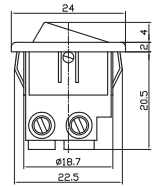
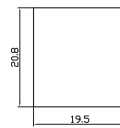
MRS-101-5 ON-OFF
MRS-111-5 (ON)-OFF
10A 125VAC; 6A 250VAC
SPST 2P



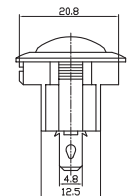
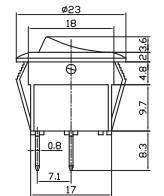
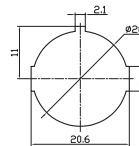
MRS-102-6 ON-ON
12A 125VAC; 6A 250VAC
SPDT 3P



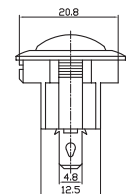
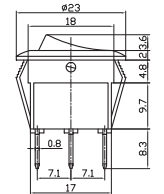
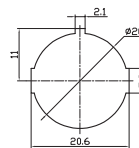
MRS-101-7 ON-OFF
10A 125VAC; 6A 250VAC
SPST 2P



MRS-101-8 ON-OFF
13A 125VAC; 6.5A 250VAC
SPST 2P



MIRS-101-8 ON-OFF
SPST 3P
MRS-102-8 ON-ON
MRS-103-8 ON-OFF-ON
13A 125VAC; 6.5A 250VAC
SPDT 3P





小型波动开关
小型带灯波动开关

Miniature Rocker Switch
Miniature Illuminated Rocker Switch

MRS Series
MIRS Series

	<p>MRS-101-9 ON-OFF 10A 125VAC;6A 250VAC SPST 2P</p>	
	<p>MIRS-101-9 ON-OFF SPST 3P MRS-102-9 ON-ON MRS-103-9 ON-OFF-ON 10A 125VAC;6A 250VAC SPDT 3P</p>	
	<p>MRS-101-9H ON-OFF 10A 125VAC;6A 250VAC SPST 2P</p>	
	<p>MIRS-101-9H ON-OFF SPST 3P MRS-102-9H ON-ON MRS-103-9H ON-OFF-ON 10A 125VAC;6A 250VAC SPDT 3P</p>	
	<p>MRS-101-10 ON-OFF 10A 125VAC;6A 250VAC SPST 2P</p>	
	<p>MIRS-101-10 ON-OFF 10A 125VAC;6A 250VAC SPST 3P</p>	
	<p>MRS-103-12 10A 125VAC;6A 250VAC MRS-103A-12 16A 125VAC;10A 250VAC ON-ON-OFF SPDT 3P</p>	



小型波动开关

小型带灯波动开关

Miniature Rocker Switch

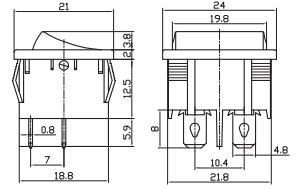
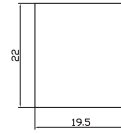
Miniature Illuminated Rocker Switch

MRS Series

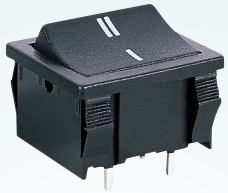
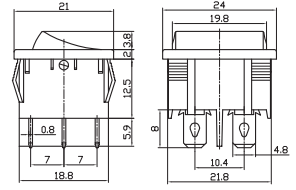
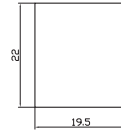
MIRS Series



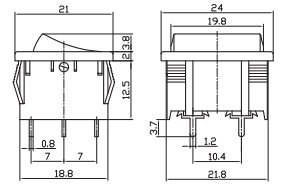
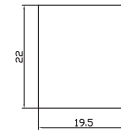
MRS-201 ON-OFF
MRS-211 (ON)-OFF
MRS-201A ON-OFF
MRS-211A (ON)-OFF
DPST 4P



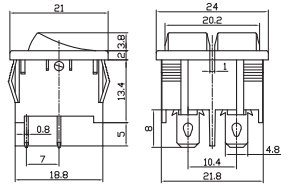
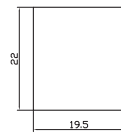
MRS-202 ON-ON
MRS-203 ON-OFF-ON
MRS-202A ON-ON
MRS-203A ON-OFF-ON
DPDT 6P



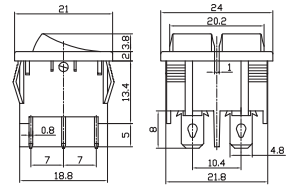
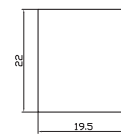
MRS-202P ON-ON
MRS-203P ON-OFF-ON
MRS-202AP ON-ON
MRS-203AP ON-OFF-ON
DPDT 6P



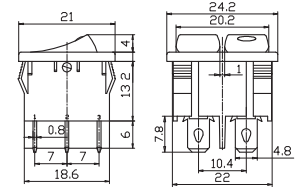
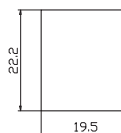
MRS-2101 ON-OFF
MRS-2111 (ON)-OFF
MRS-2101A ON-OFF
MRS-2111A (ON)-OFF
DPST 4P



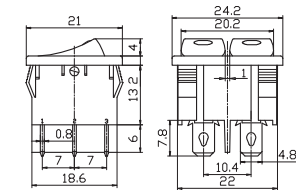
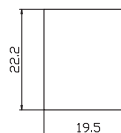
MRS-2102 ON-ON
MRS-2103 ON-OFF-ON
MRS-2102A ON-ON
MRS-2103A ON-OFF-ON
DPDT 6P



MIRS-101AE-111A ON-ON/(ON)-OFF
20A 12VDC
DPST 5P



MIRS-2101AE ON-OFF
20A 12VDC
DPST 6P





小型波动开关
小型带灯波动开关

Miniature Rocker Switch

Miniature Illuminated Rocker Switch

MRS Series
MIRS Series

	<p>MRS-201-3 ON-OFF DPST 4P L1=3; 8 L2=5.5; 9</p>			
	<p>MRS-202-3 ON-ON MRS-203-3 ON-OFF-ON DPDT 6P L1=3; 8 L2=5.5; 9</p>			
	<p>MIRS-201-4 ON-OFF MRS-201-4 ON-OFF 10A 125VAC;6A 250VAC DPST 4P</p>			
	<p>MIRS-202-4 ON-ON 10A 125VAC;6A 250VAC DPDT 6P</p>			
	<p>MRS-201-5 ON-OFF MRS-211-5 (ON)-OFF 10A 125VAC;6A 250VAC DPST 4P</p>			
	<p>MRS-202-5 ON-ON MRS-203-5 ON-OFF-ON MRS-212-5 (ON)-ON MRS-213-5 (ON)-OFF-ON MRS-223-5 (ON)-OFF-(ON) 10A 125VAC;6A 250VAC DPDT 6P</p>			
	<p>MIRS-101-5 ON-OFF 10A 125VAC;6A 250VAC SPST 3P</p>			