



## 型号说明 Ordering Information

PBS-10B-2

- 改进2型 Improved type 2
- 电路特性 Circuitry trait
- 产品序号 Product order
- 按钮开关 Push-button switch

## 技术特性 Specification

- 1.规格 Rating:3A 125VAC;1A 250VAC
- 2.接触电阻 Contact Resistance:20mΩ max
- 3.绝缘电阻 Insulation Resistance:500VDC 100MΩ min
- 4.耐电压 Dielectric Strength:1000VAC, 1Minute
- 5.操作温度 Operating Temperature:-25°C ~ +85°C
- 6.电气寿命 Electrical Life:50,000 Cycles

### 电路特性 Circuitry trait

A	ON - OFF	Push on/Push off	With lock
B	(ON) - OFF	Push on	Momentary(Open type)
C	ON - (OFF)	Push off	Momentary(Close type)

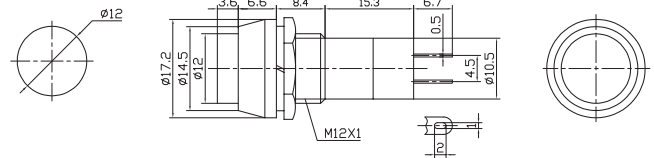
( ):回弹指示 Indicates Momentary

### 按钮颜色 Push-button color

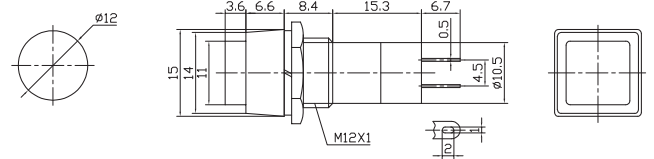
红 Red	白 White
绿 Green	黑 Black
桔黄 Orange	黄 Yellow
蓝 Blue	



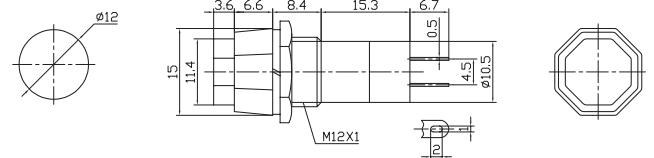
- PBS-11A ON-OFF
- PBS-11B OFF-(ON)
- PBS-11C ON-(OFF)



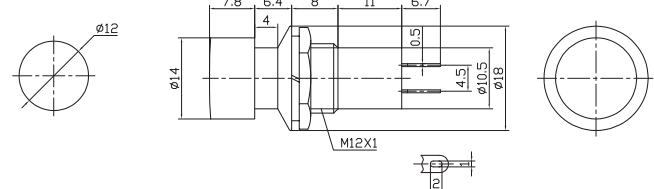
- PBS-12A ON-OFF
- PBS-12B OFF-(ON)
- PBS-12C ON-(OFF)



- PBS-14A ON-OFF
- PBS-14B OFF-(ON)
- PBS-14C ON-(OFF)



- PBS-16A ON-OFF
- PBS-16B OFF-(ON)
- PBS-16C ON-(OFF)





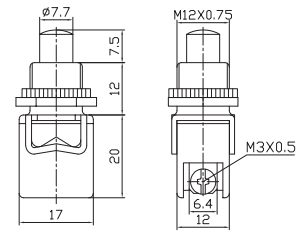
# 按钮开关

# Push-Button Switch

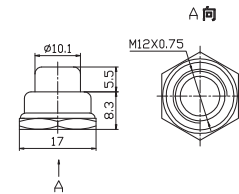
# PBS Series



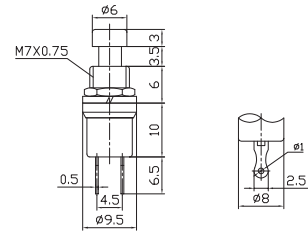
**PBS-13B** OFF-(ON)  
**PBS-13C** ON-(OFF)  
 8A 125VAC; 4A 250VAC



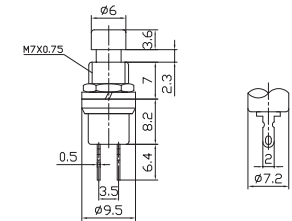
**WPC-13**  
 M12 x 0.75



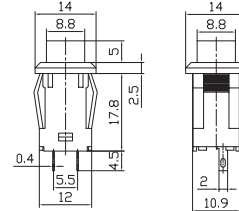
**PBS-10B** OFF-(ON)  
 (Plastic rod)



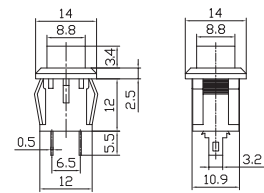
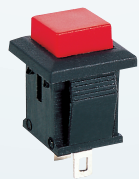
**PBS-10B-2** OFF-(ON)  
**PBS-10C-2** ON-(OFF)  
 (Metal rod)



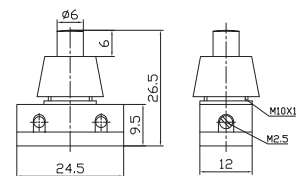
**PBS-15A** ON-OFF



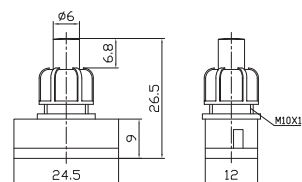
**PBS-15B** OFF-(ON)  
**PBS-15C** ON-(OFF)



**PBS-17A** ON-OFF  
 4A 125VAC; 2A 250VAC



**PBS-17A-2** ON-OFF  
 (原PBS-17B)





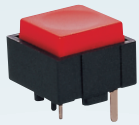
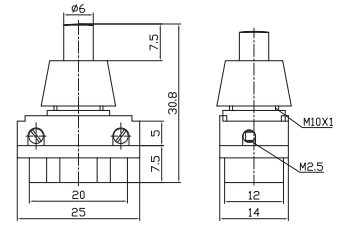
# 按钮开关

# Push-Button Switch

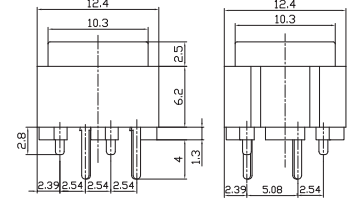
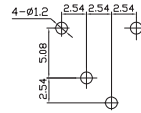
# PBS Series



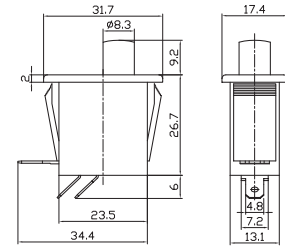
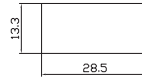
**PBS-17A-3** ON-OFF  
4A 125VAC;2A 250VAC



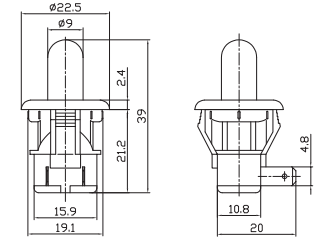
**PBS-18B** OFF-(ON)  
25mA 50VAC or DC



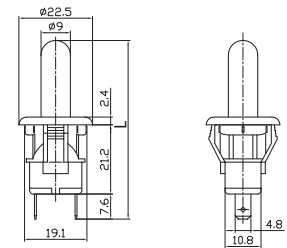
**PBS-19-111** ON-(OFF)  
SPST 2P  
**PBS-19-112** ON-(ON)  
SPDT 3P  
6A 250VAC;10A 125VAC



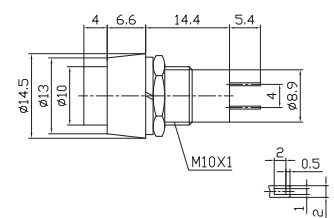
**PBS-19B** OFF-(ON)  
**PBS-19C** ON-(OFF)  
5A 125VAC;2.5A 250VAC



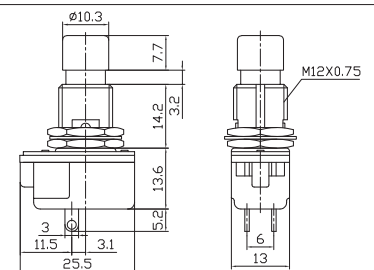
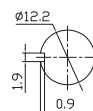
**PBS-19B-2** OFF-(ON)  
**PBS-19C-2** ON-(OFF)  
L=54.6  
**PBS-19B-3** OFF-(ON)  
**PBS-19C-3** ON-(OFF)  
L=44.6  
5A 125VAC;2.5A 250VAC



**PBS-20A-2** ON-OFF  
**PBS-20B-2** OFF-(ON)



**PBS-24B-2** OFF-(ON)  
**PBS-24C-2** ON-(OFF)  
10A 125VAC;6A 250VAC  
SPST 2P





# 按钮开关

# Push-Button Switch

# PBS Series

	<p><b>PBS-24A-3</b> ON-OFF 6A 250VAC;10A 125VAC</p>			
	<p><b>PBS-24B-3</b> (ON)-OFF 6A 250VAC;10A 125VAC</p>			
	<p><b>PBS-24B-4</b> OFF-(ON) 2A 250VAC;4A 125VAC</p>			
	<p><b>PBS-24-102</b> ON-ON <b>PBS-24-112</b> ON-(ON) 2A 250VAC;4A 125VAC SPDT 3P (L=14.2, 11.8, 9.8)</p>			
	<p><b>PBS-24-202</b> ON-ON <b>PBS-24-212</b> ON-(ON) 2A 250VAC;4A 125VAC DPDT 6P (L=14.2, 11.8, 9.8)</p>			
	<p><b>PBS-24-102P</b> ON-ON <b>PBS-24-112P</b> ON-(ON) 2A 250VAC;4A 125VAC SPDT 3P (PC terminal) (L=14.2, 11.8, 9.8)</p>			
	<p><b>PBS-24-202P</b> ON-ON <b>PBS-24-212P</b> ON-(ON) 2A 250VAC;4A 125VAC DPDT 6P (PC terminal) (L=14.2, 11.8, 9.8)</p>			
	<p><b>PBS-26B</b> OFF-(ON) <b>PBS-26C</b> ON-(OFF) 4A 125VAC;2A 250VAC</p>			



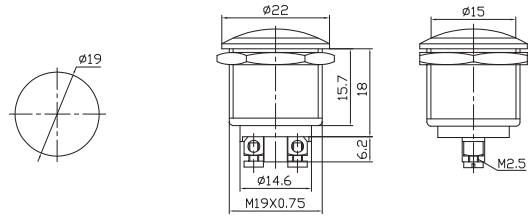
# 按钮开关

# Push-Button Switch

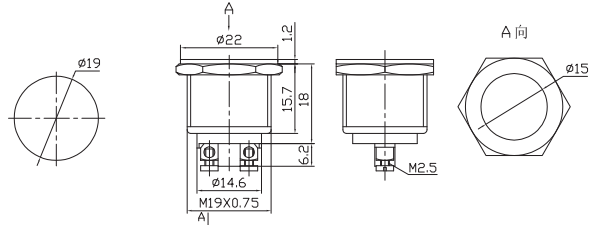
# PBS Series



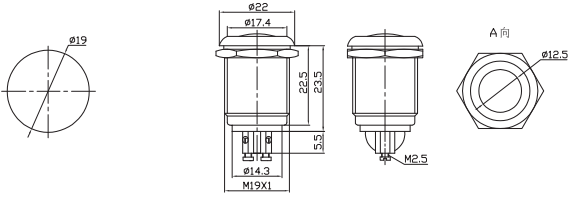
**PBS-28B** OFF-(ON)  
**PBS-28C** ON-(OFF)  
**PBS-28B-W** OFF-(ON)  
**PBS-28C-W** ON-(OFF)  
 4A 125VAC;2A 250VAC  
 "W" Means The Switch Has  
 Waterproof Rubber Ring(IP66)



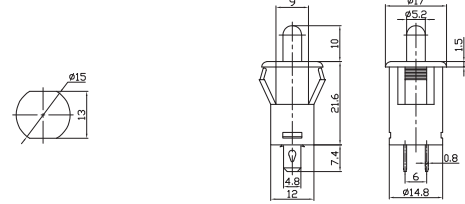
**PBS-28B-2** OFF-(ON)  
**PBS-28C-2** ON-(OFF)  
**PBS-28B-2-W** OFF-(ON)  
**PBS-28C-2-W** ON-(OFF)  
 4A 125VAC;2A 250VAC  
 "W" Means The Switch Has  
 Waterproof Rubber Ring(IP66)



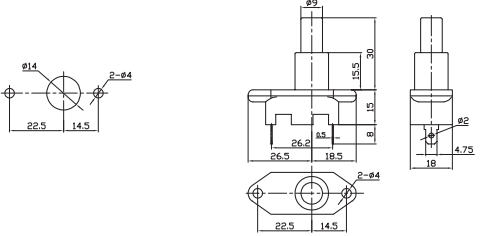
**PBS-28B-3** OFF-(ON)  
 4A 125VAC;2A 250VAC  
 IP66  
 With Waterproof Rubber Ring



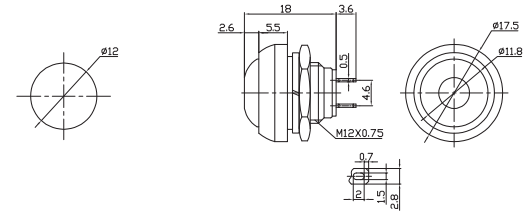
**PBS-29B** OFF-(ON)



**PBS-32B** OFF-(ON)  
 10A 125VAC;6A 250VAC



**PBS-33B** OFF-(ON)



**PBS-34B** OFF-(ON)  
 10A 125VAC;6A 250VAC

