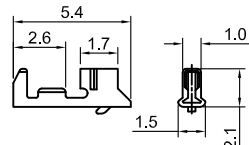


The information provided herein is from CONNELY Electronic Co., Ltd. and is confidential. Any disclosure to a party other than the recipient is prohibited. The intellectual properties and its rights contained herein, including but not limited to, trademarks, patents, copyrights, trade secrets, and technical know-how, are owned exclusively by CONNELY or its affiliates. Unauthorized use of this information in any format or manner. CONNELY may enforce its intellectual property rights at its own discretion; failures or delays in exercising such rights does not constitute a waiver of such rights.

1 2 3 4 5 6 7 8

| REV. | DESCRIPTION | DRAWN | CHECKED | APPROVED |
|------|----------------|---------------|---------------|---------------|
| A | NEW RELEASE | LJH 05/09/05' | | LJC 05/09/05' |
| B | DRAWING UPDATE | JLZ 06/15/16' | HZW 06/15/16' | LJC 06/15/16' |
| C | DRAWING UPDATE | JLZ 04/30/19' | | |

Female TERMINAL



T-DS1066-S C X 0 0

Contact Plating
6: Tin

Female Terminal

| Wire Range | | O.D of Wire |
|--------------------------------|-------|-------------|
| Section Area (mm) ² | AWG# | mm |
| 0.05-0.22 | 30-24 | 0.9-1.5 |

NOTES:

1. MAIN SPECIFICATIONS

- . Housing material: NYLON 66
- . Wire range: AWG#30~#24
- . Rated voltage: 100V
- . Rated current: 2A(24AWG)
- . Contact resistance: 30mΩ Max
- . Insulation resistance: 1000MΩ Min
- . Withstanding voltage: 500V,AC 1 minute
- . Temperature range: -25 ~ +85°C
- . Recommend PC board thickness:1.6mm

2. PRODUCT NUMBER CODE:

DS1066 - X X X X X X X

Bend Type (R/A only)
A: Type A
B: Type B

Contact Type
X: W/O kink
S: W/ kink

Contact Plating
6: Tin
8: Full gold flash

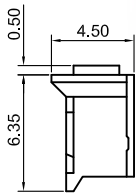
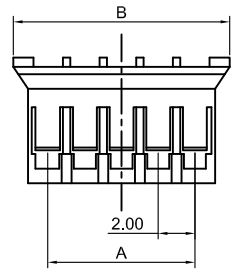
Housing Color
W: White
E: Orange

Mounting type
V: V/T type
R: Right Angle

Connector type
M: Male

No.of contact
2 to 15

Female HOUSING

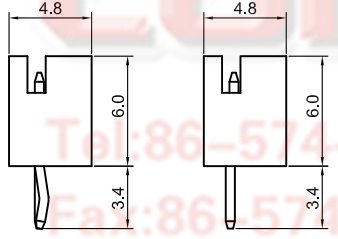
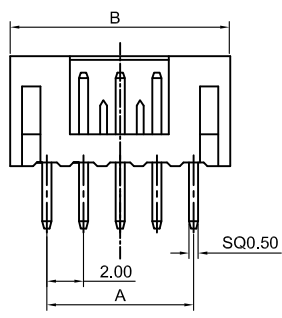


I-DS1066-S C X 0 X

No.of Hole
02~15

Color of Housing
E: Orange
W: White

Male V/T type



W/ kink W/O kink

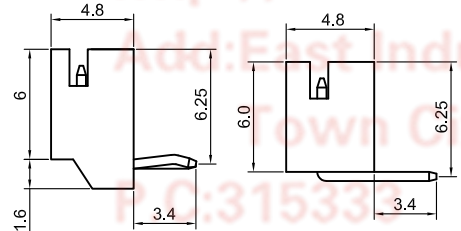
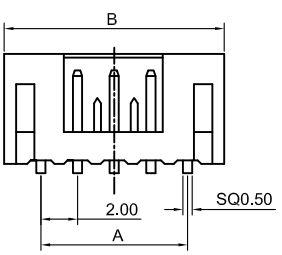
Female HOUSING

| Position | DIMENSION | |
|----------|-----------|------|
| | A | B |
| 2 | 2.0 | 6.0 |
| 3 | 4.0 | 8.0 |
| 4 | 6.0 | 10.0 |
| 5 | 8.0 | 12.0 |
| 6 | 10.0 | 14.0 |
| 7 | 12.0 | 16.0 |
| 8 | 14.0 | 18.0 |
| 9 | 16.0 | 20.0 |
| 10 | 18.0 | 22.0 |
| 11 | 20.0 | 24.0 |
| 12 | 22.0 | 26.0 |
| 13 | 24.0 | 28.0 |
| 14 | 26.0 | 30.0 |
| 15 | 28.0 | 32.0 |

Male

| Position | DIMENSION | |
|----------|-----------|------|
| | A | B |
| 2 | 2.0 | 5.8 |
| 3 | 4.0 | 7.8 |
| 4 | 6.0 | 9.8 |
| 5 | 8.0 | 11.8 |
| 6 | 10.0 | 13.8 |
| 7 | 12.0 | 15.8 |
| 8 | 14.0 | 17.8 |
| 9 | 16.0 | 19.8 |
| 10 | 18.0 | 21.8 |
| 11 | 20.0 | 23.8 |
| 12 | 22.0 | 25.8 |
| 13 | 24.0 | 27.8 |
| 14 | 26.0 | 29.8 |
| 15 | 28.0 | 31.8 |

Male RIGHT ANGLE



Type A Type B

| GENERAL TOLERANCE | | ANGLE TOLERANCE | |
|-------------------|-------|-----------------|-----|
| X. | ±0.60 | X. | ±5° |
| .X | ±0.38 | .X | ±3° |
| .XX | ±0.25 | .XX | ±2° |

| PROJECTION | TITLE | P.C.B CONNECTOR 2.0mm PH TYPE | |
|------------|-------|-------------------------------|---------------|
| | mm | SHEET SIZE | A4 |
| UNITS | mm | SERIES | DS1066 SERIES |

| DRAWING TYPE | CUSTOMER | | |
|--------------|--------------------|-------|--------|
| SCALE | 1:1 | SHEET | 1 OF 1 |
| DRAWING NO. | C-DS1066-XXXXXXX-C | | |

晨翔电子有限公司
CONNELY CONNELY ELECTRONIC CO. LTD

1 2 3 4 5 6 7 8