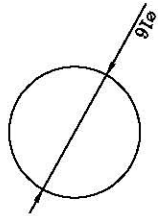
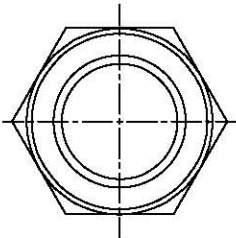
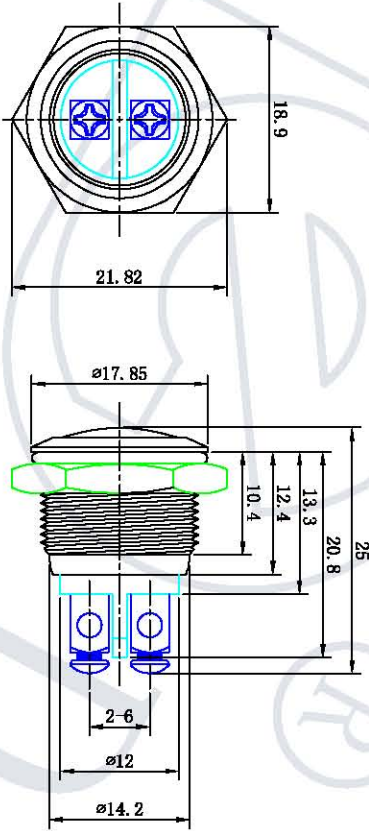
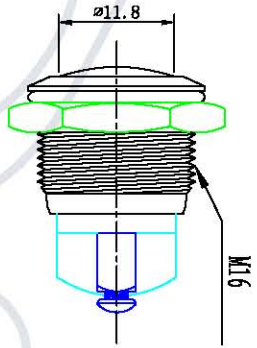
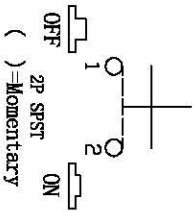


B91-09



安装面板
PANEL CUT-OUT



SPECIFICATIONS

1. Contact Rating: 2A @ 36V
2. Electrical Life: 50,000 cycles
3. Contact Resistance: 50m-ohms max (initial)
4. Insulation Resistance: 1,000M-ohms min @ 500VDC
5. Dielectric Strength: 2,000V RMS 50 ~ 60Hz
6. Operating Temperature: -40° C ~ +85° C
7. Switch function: 1NO Momentary
8. IP Class: IP65 Protection
9. Torque: 5 ~ 14Nm. max. applied to nut
10. Operating Force: 5N max

MATERIALS

1. Button: Stainless Steel or Copper plating chrome
2. Bushing & Bezel: Stainless steel or Copper plating chrome
3. Base: PBT
4. Contact: Silver contact
5. Nut: Nickel plated brass

| |
|------------|
| 借 (通) 用件备注 |
| 插图 |
| 插校 |
| 旧底图总号 |
| 底图总号 |
| 签字 |
| 日期 |

| | | | | | |
|--------------------|----|----|--------|---------------------------------|-------|
| 按钮开关 | | | | Yaoqing Dater Electron co., Ltd | |
| 标记 | 处数 | 分区 | 更改文件号 | 签字 | 日期 |
| 设计 | | | 标准化 | | |
| 校对 | | | | | |
| 审核 | | | 批准 | | |
| 工艺 | | | | | |
| 阶段标记 | | | 数量 | 重量 | 比例 |
| 第 一 页 | | | 1 | | 1.5:1 |
| 第 一 张 | | | | | |
| Push Button Switch | | | GQ-16B | | |
| | | | | | |

2

3

4

5

6

7